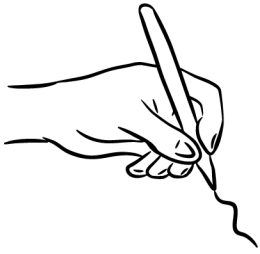


CELEBRATING MANITOBA DAY

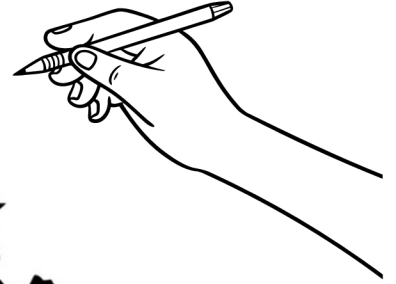
with Heritage Winnipeg





COLOURING PAGE

KNOX UNITED CHURCH

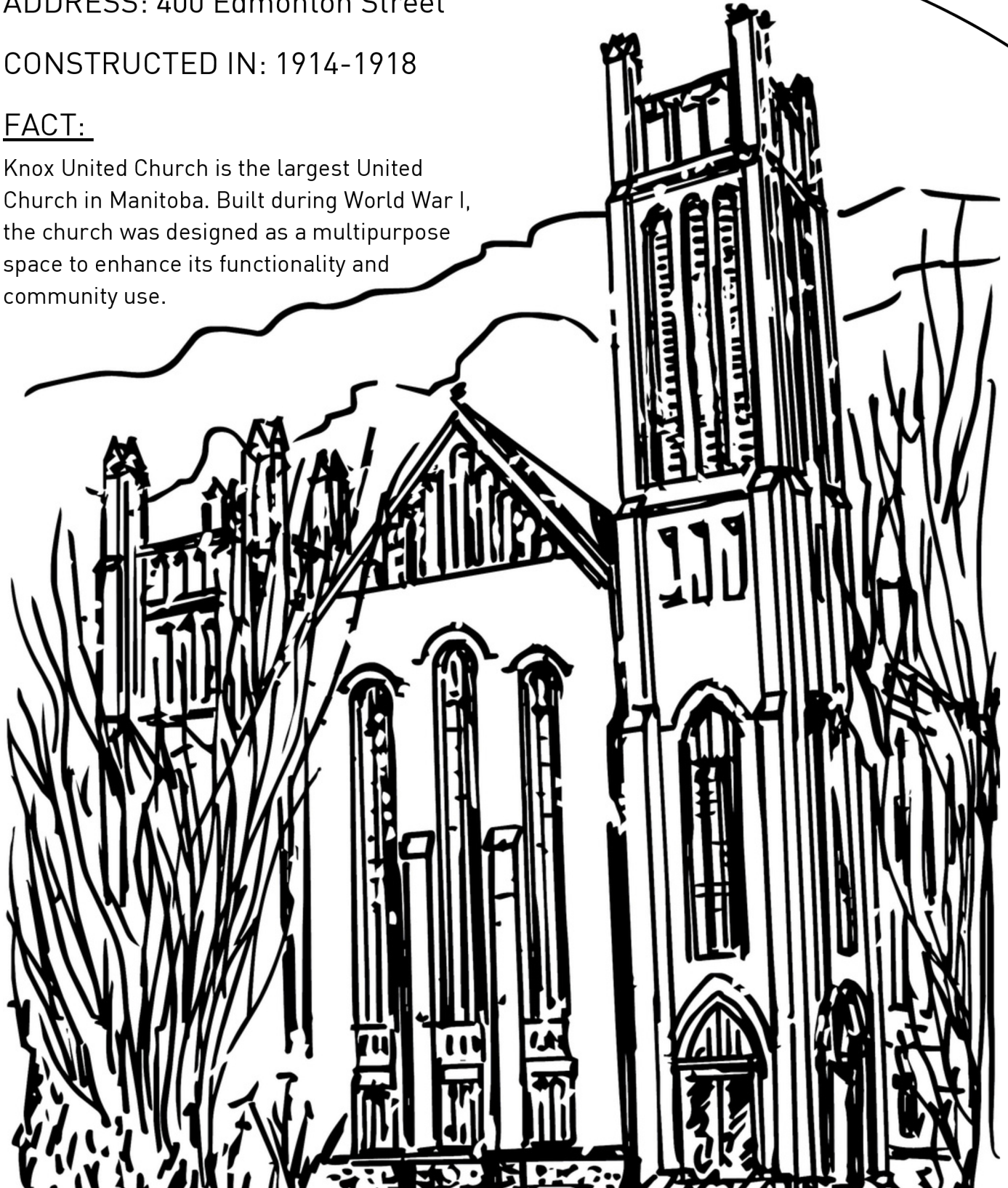


ADDRESS: 400 Edmonton Street

CONSTRUCTED IN: 1914-1918

FACT:

Knox United Church is the largest United Church in Manitoba. Built during World War I, the church was designed as a multipurpose space to enhance its functionality and community use.



WORD SEARCH



Can you find the Manitoba towns and cities hidden in this word search?

K R J R J I Q O K I V D G B Z
P Q W Z V D E Q Y G O H O M W
T H O M P S O N T I T W Q M S
T Y M C B I C S H M S E W Q Q
N D B B N T K M E L T C I R Z
I H B U G R Z J P I E Y N M E
J I A M Y V K O A M I C K O E
B L Z V O P F S S G N U L R K
R C H U R C H I L L B E E D S
A S E L K I R K P U A U R E O
N U G F E U F T I F C K H N B
D D L P F A F Z D Y H I G P L
O C Q W A V C M C L N U Z E A
N P T X W I N N I P E G P W Z
V T G Y F O W Q K S Y L R C N

CHURCHILL
THOMPSON
BRANDON

WINNIPEG
SELKIRK
THE PAS
MORDEN

STEINBACH
WINKLER
GIMLI



TRIVIA



PUT YOUR KNOWLEDGE TO THE TEST

1. What is Manitoba's provincial animal?

2. What colours are featured on Manitoba's flag?
 - a. Red, White & Green
 - b. Red, Blue, White, Green & Brown
 - c. Red, Yellow, Green, White
 - d. Red, Brown, Blue

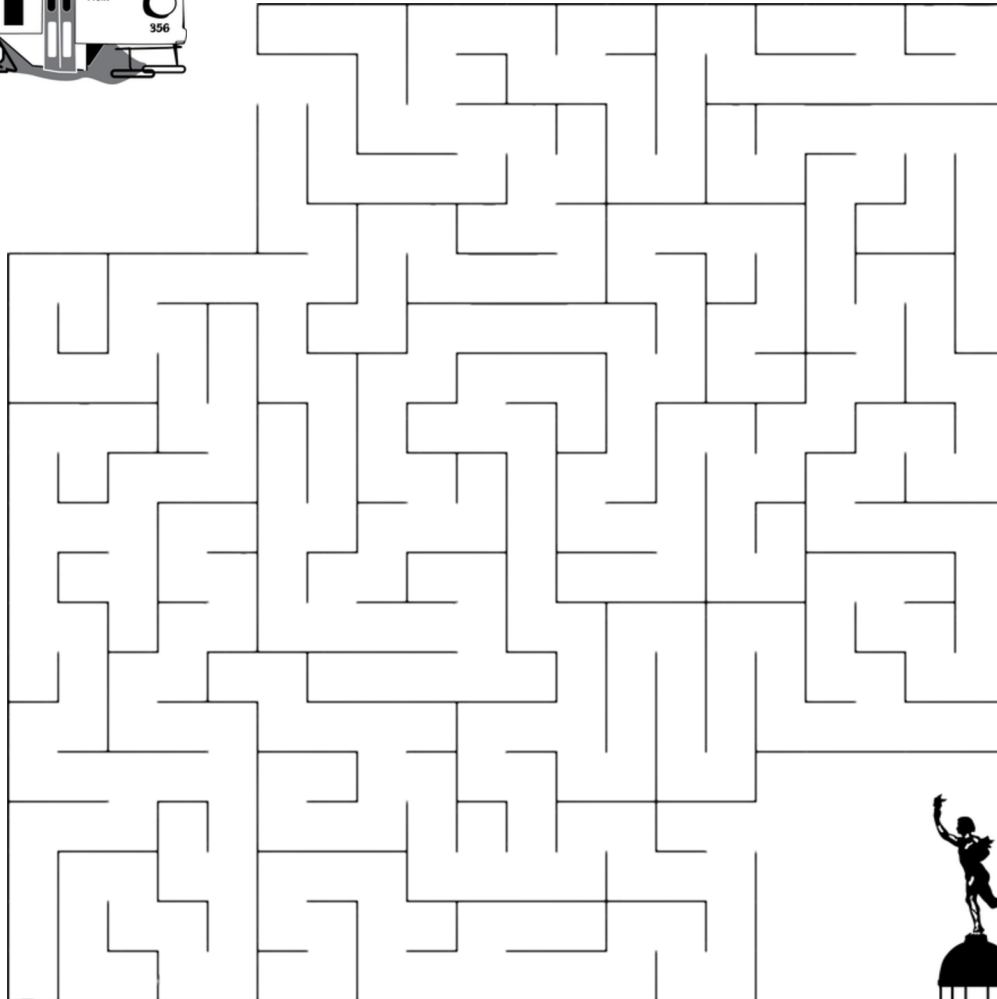
3. Manitoba's capital city is Winnipeg which originates from the Cree name "win-nipi", what does this translate as?
 - a. Muddy Waters
 - b. Meeting Waters
 - c. Murky Waters
 - d. Great Lakes

4. Which popular fictional bear's name was influenced by Winnipeg?

5. The Forks is historically known for gathering and trade, which two rivers meet at this intersection?

MAZE

GET STREETCAR 356 TO THE LEGISLATIVE BUILDING

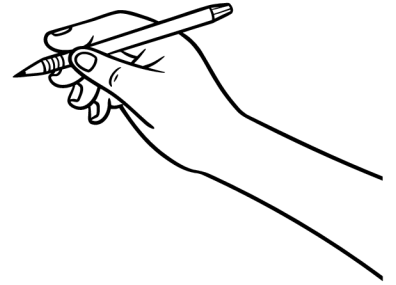


FACT

Heritage Winnipeg owns the last remaining original wooden streetcar in Winnipeg, Streetcar 356, built in 1909. It rode the rails in Winnipeg until 1955. It is stored in the Railway Museum at the VIA Rail Canada Union Station on 123 Main Street.



COLOURING PAGE



THE WOMEN'S TRIBUTE MEMORIAL LODGE

ADDRESS: 200 Woodlawn Street

CONSTRUCTED IN: 1931

FACT:

The building was designed as a veterans' memorial with funds raised by women in Manitoba. The lodge was designed to serve as a symbol of remembrance for those who served in World War I. At the time, the building functioned as a monument but also as a living memorial, providing veterans with a space to support them as they continued to rebuild their lives.



MANITOBA BINGO

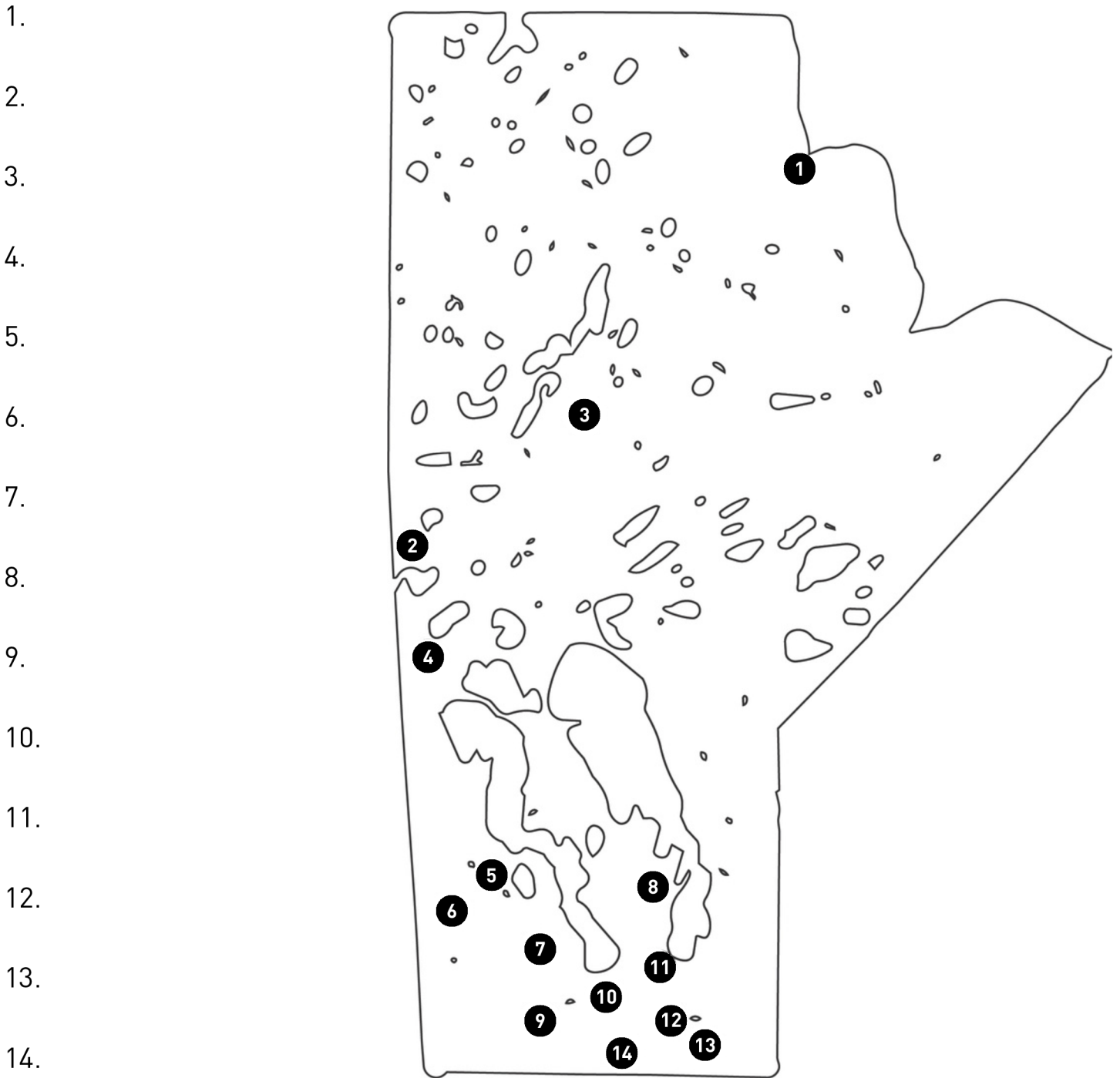
CHECK OFF IF YOU HAVE COMPLETED THE SPACE

COMPARE YOUR BINGO WITH YOUR FRIENDS

VISITED THE EXCHANGE DISTRICT	SKATED AT THE FORKS	RODE ON WINNIPEG TRANSIT	SEEN A POLAR BEAR IN CHURCHILL	ATE HONEY DILL SAUCE
ATTENDED DOORS OPEN WINNIPEG	SEEN THE NORTHERN LIGHTS	BEEN TO A WINNIPEG JETS HOCKEY GAME	ATTENDED FESTIVAL DU VOYAGEUR	SEEN A SHOW AT THE BURTON CUMMINGS THEATRE
VISITED FIVE MUSEUMS IN MANITOBA	SEEN A CANADIAN GOOSE		SEEN A BISON AT FORT WHYTE ALIVE	GONE SWIMMING IN WHITESHELL PROVINCIAL PARK
WENT TO A FOLKLORAMA PAVILION	ATE BANNOCK	VISITED THE TRAPPIST MONASTERY	EXPERIENCED A SNOW STORM	GONE INSIDE A HISTORIC BUILDING
ATTENDED FIRST FRIDAYS IN THE EXCHANGE	BEEN TO THE MANITOBA LEGISLATIVE BUILDING	TAKEN A WALK IN ASSINIBOINE PARK	BEEN TO A GOLDEYES GAME	TAKEN A TOUR AT THE ROYAL CANADIAN MINT

MAP LABELING

LABEL MANITOBA'S MAJOR CITIES

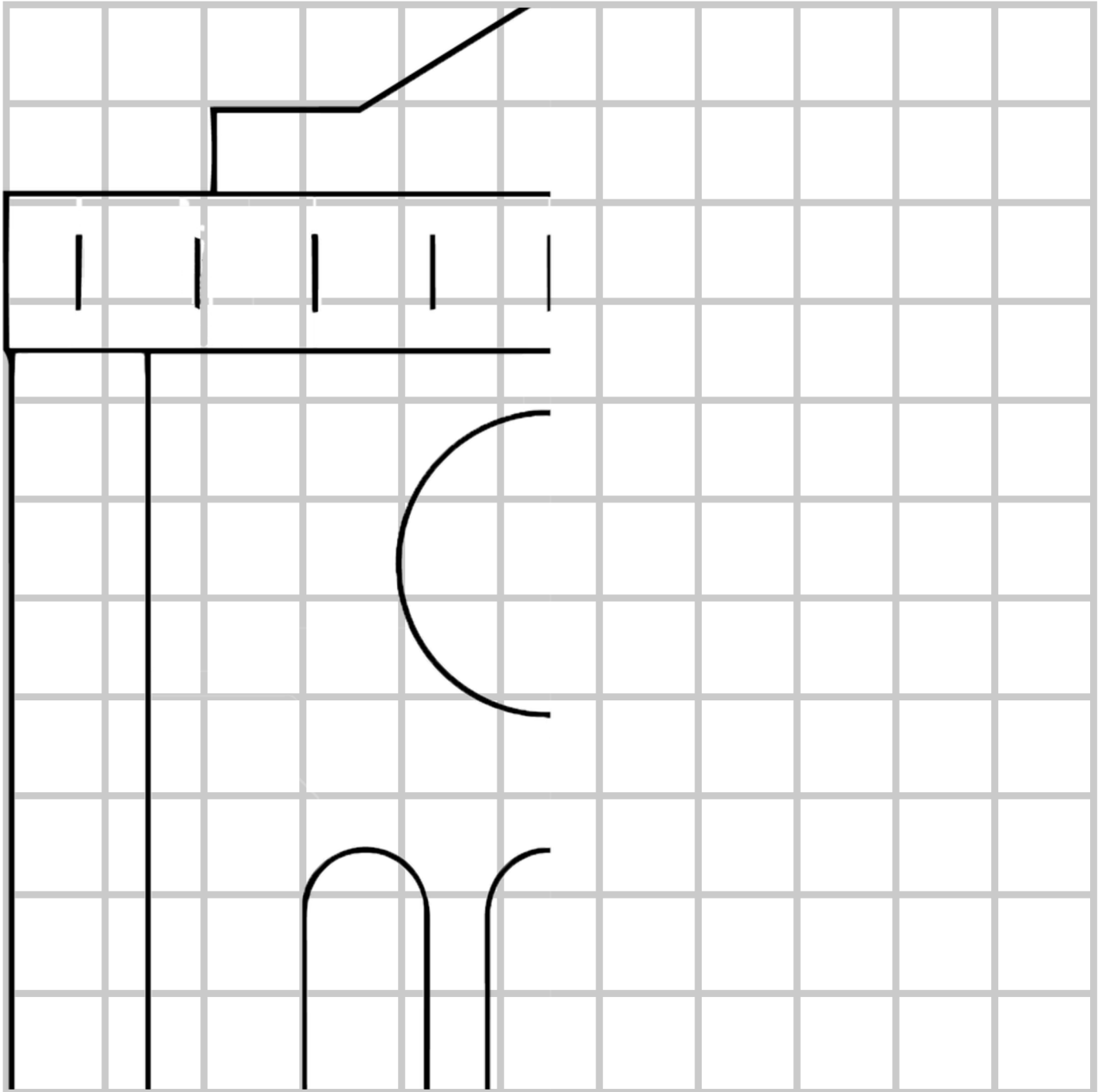


WORD BANK

- Churchill
- Steinbach
- Winnipeg
- Thompson
- Flin Flon
- Dauphin
- Winkler
- Brandon
- Neepawa
- Arborg
- Portage
- Selkirk
- Russell
- The Pas

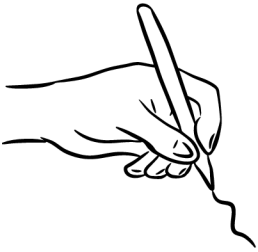
SYMMETRY DRAWING

DRAW THE OTHER HALF OF THE
ST. BONIFACE CATHEDRAL



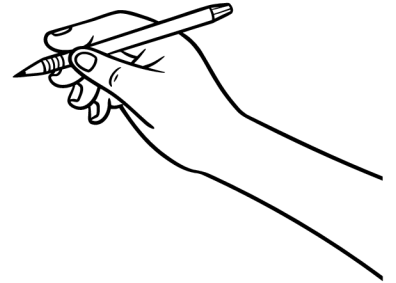
FACT

The St. Boniface Cathedral was damaged by a fire in 1968, destroying most of the building. Following the fire, the site was preserved by supporting the existing historical façade while creating a contemporary community space within, completed in 1972.



COLOURING PAGE

ASPER JEWISH COMMUNITY CAMPUS



ADDRESS: 123 Doncaster Street

CONSTRUCTED IN: 1905

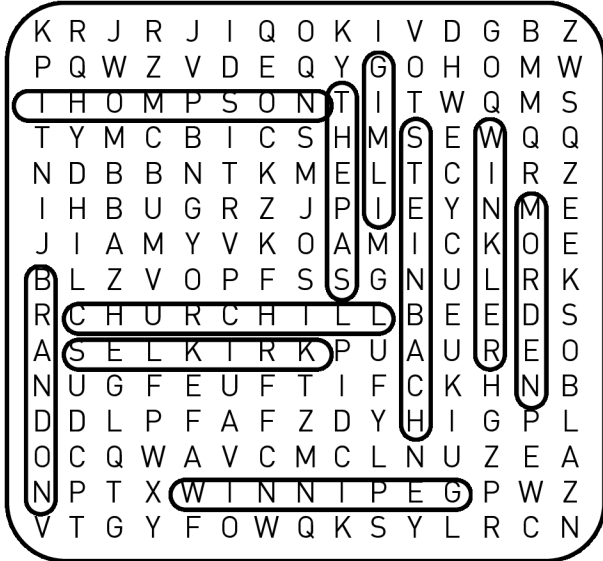
FACT:

The building has served many purposes throughout its history, being adaptively reused to continue serving the community over many decades. Originally designed as the Manitoba Agricultural College to educate students on modern farming practices, the space later evolved to become home for the Manitoba School for the Deaf, and an army base renamed Fort Osborne Barracks. Today, it serves as The Asper Jewish Community Campus, acting as a centrepiece for the Jewish community in Winnipeg.



ANSWER KEY

WORD SEARCH



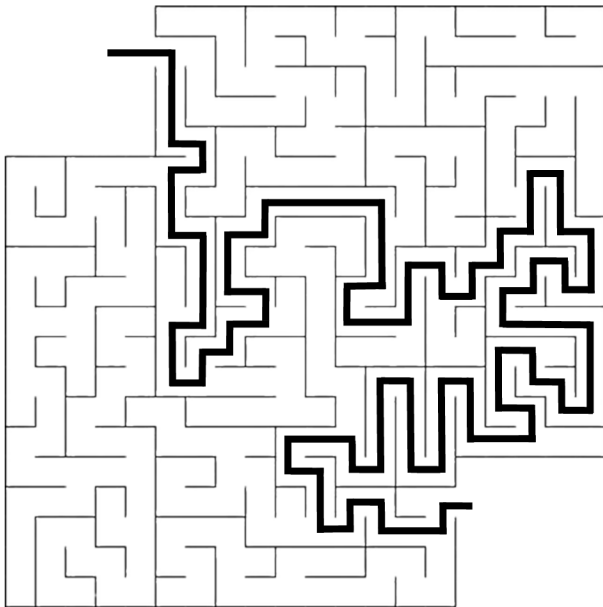
MANITOBA TRIVIA

1. Bison
2. B. Red, Blue, White, Green & Brown
3. A. Muddy Waters
4. Winnie the Pooh
5. Red & Assiniboine River

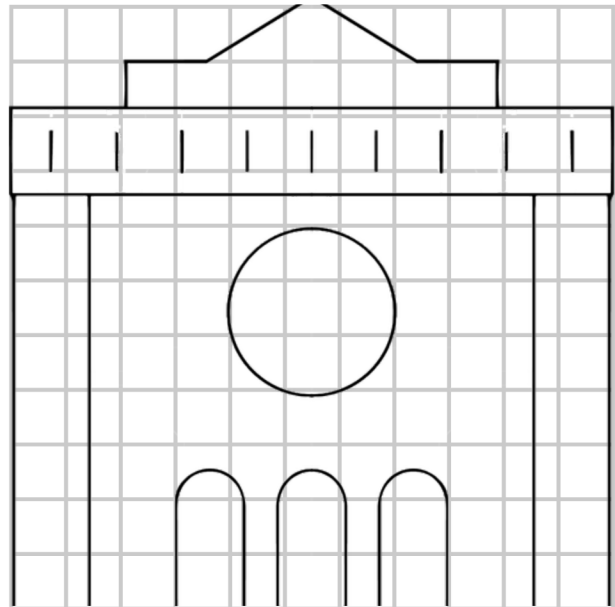
MAP LABELING

1. Churchill
2. Flin Flon
3. Thompson
4. The Pas
5. Dauphin
6. Russell
7. Neepawa
8. Arborg
9. Brandon
10. Portage
11. Selkirk
12. Winnipeg
13. Steinbach
14. Winkler

MAZE



SYMMETRY DRAWING



PRESENTED BY HERITAGE WINNIPEG



DOORS OPEN

WINNIPEG

PORTES

23RD ANNUAL

VERTES

Free Event!

**MAY 30-31
2026**

CELEBRATING THE STORIES
OUR BUILDINGS TELL



DOORSOPENWINNIPEG.CA